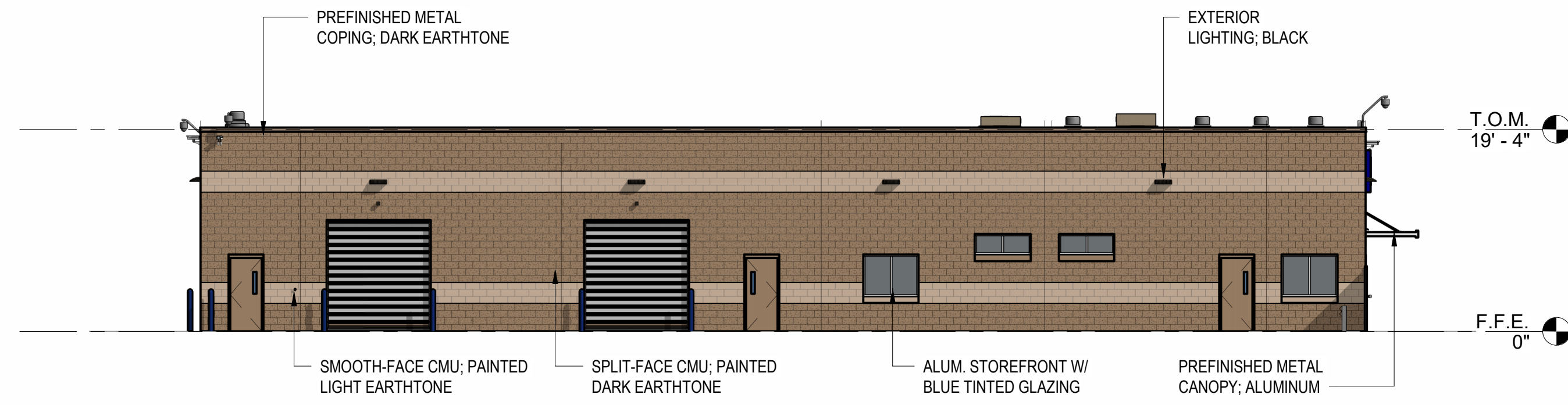
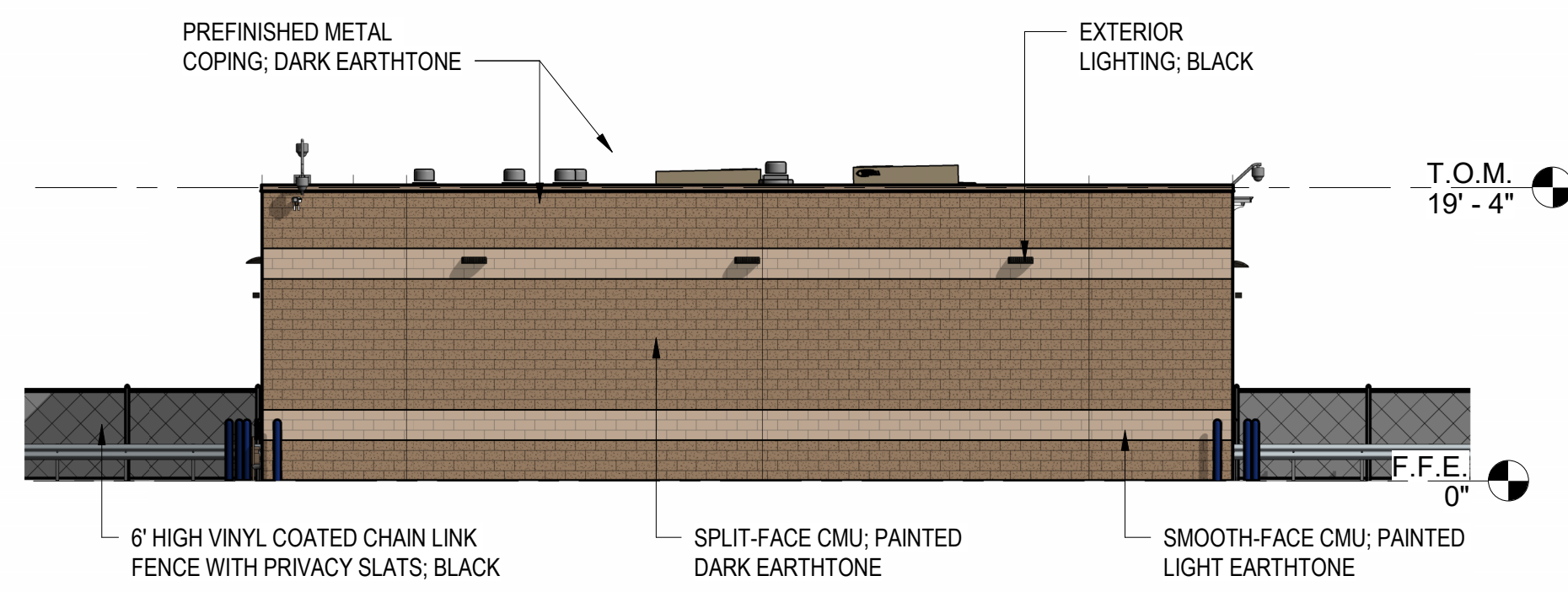


5 EAST ELEVATION - AUCTION
 A 2.1 3/32" = 1'-0"



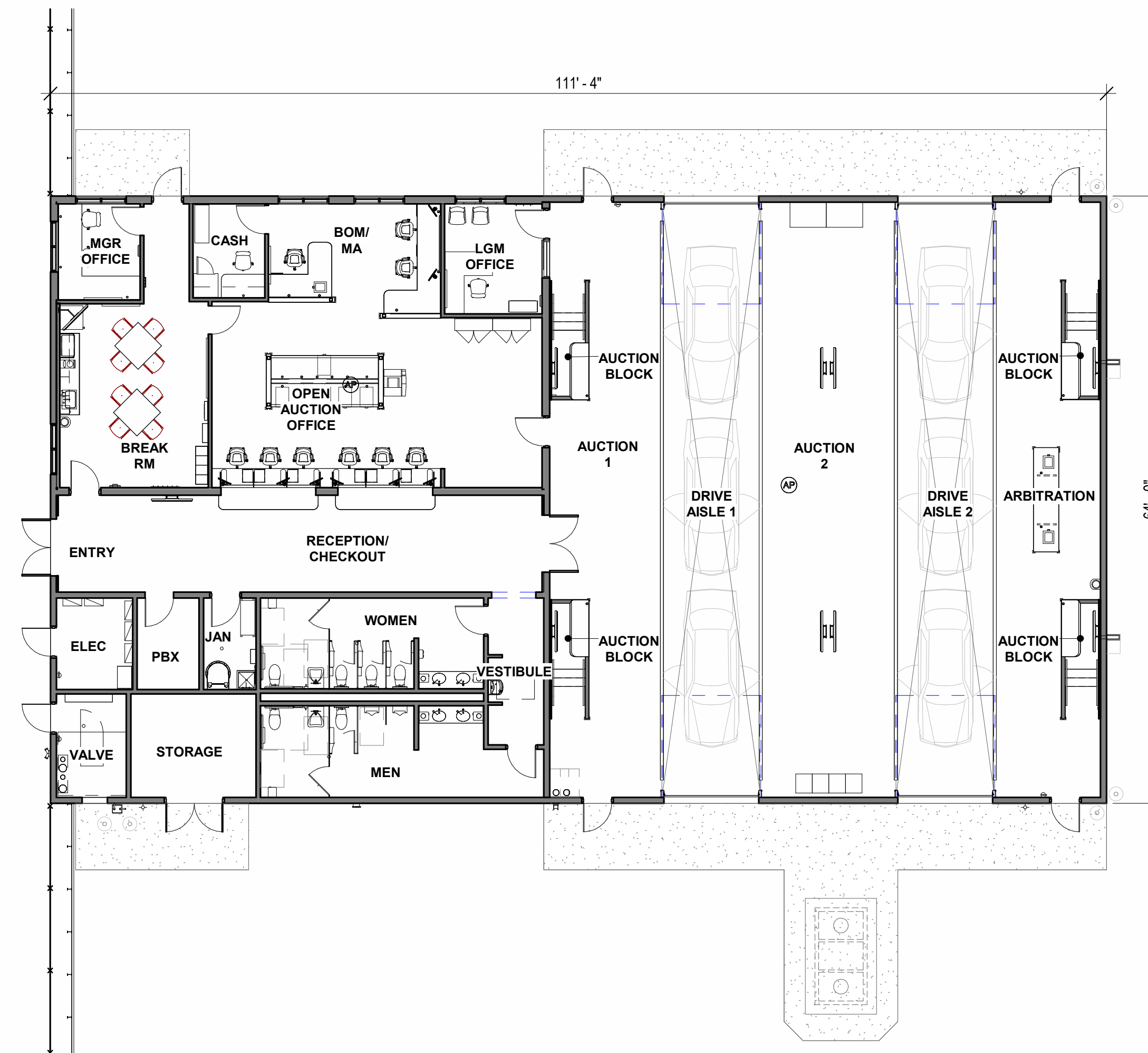
4 WEST ELEVATION - AUCTION
 A 2.1 3/32" = 1'-0"



3 NORTH ELEVATION - AUCTION
 A 2.1 3/32" = 1'-0"



2 SOUTH ELEVATION - AUCTION
 A 2.1 3/32" = 1'-0"



1 FLOOR PLAN - AUCTION
 A 2.1 3/32" = 1'-0"

